

Flexible bread line



The Glimmek Flexible Bread line is developed and manufactured to be a user-friendly and flexible bread line with high capacity and efficiency. With a capacity of up to 1800 pcs/hour, the line handles a variety of dough types and bread sizes. An accurate and gentle dough treatment provides high quality on the bread products. All machines are produced in Sweden according to CE-regulations.

SDG



Sveba Dahlen Group

SVEBA
DAHLEN



Glimmek
baking
system

Scandinavian know-how – worldwide

Flexible bread line

SD-180 Suction dough divider



- Hopper 26.4 US gal
- Stainless steel covers
- Variable speed
- Very accurate scaling
- Easy and safe handling, and maintenance

Options:

- Non-stick coated hopper
- Flour duster
- Minipiston 1.2 oz - 9 oz
- 59.5 US gal hopper
- Outfeed roller for sticky dough

	SD180XS	SD 180	SD180XL
Weight range	2.5 oz - 2.2 lb	4.3 oz - 3.5 lb	6.3 oz - 5.0 lb
Capacity	750-1800 pcs/hour		

CR-310GM Conical rounder



- Centrally adjustable tracks
- Non-stick coated cone and tracks
- Rounding length up to 13 ft
- Patented

Options:

- Frequency converter
- Flour duster
- Cold/hot air blowing unit
- Outfeed conveyor
- Outfeed roller for sticky dough

Weight range	1.05 oz - 4 lb
Capacity	up to 3600 pcs/hour

IPP Intermediate pocket proofer



- Stainless steel
- Non-stick coated transfer box
- Infeed V-belt conveyor
- Collection drawers
- Electric control panel
- Central electric cabinet

Options:

- Double infeed conveyor
- Outfeed conveyor
- Humidification System
- Modular system, 132-940 pockets
- UV-light

Weight range	3.5 oz - 3.3 lb
Capacity	up to 3000 pcs/hour

MO-671 Moulder

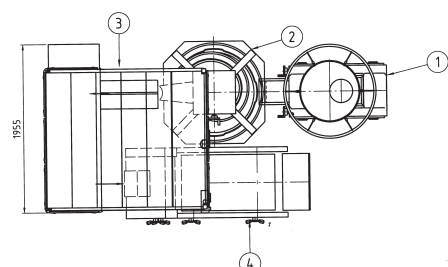
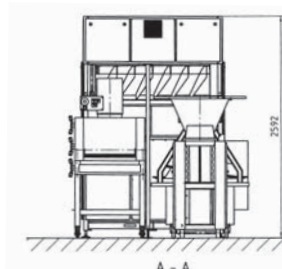
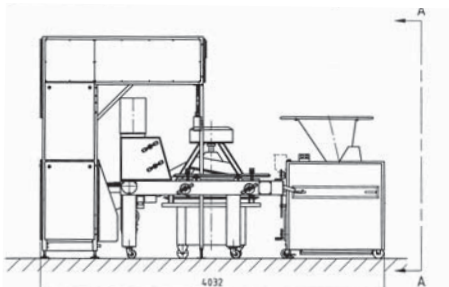


- Very flexible moulder
- Working width 25 1/2"
- Two pair of rollers
- Foldable and easy adjustable pressure board with two wedges

Options:

- Variable speed
- Lower side guides non-stick coated

Weight range	1.05 oz - 4 lb
Capacity	up to 3000 pcs/hour



1. SD-180
2. CR-310 GM
3. IPP
4. MO-671



Glimek AB

P.O. Box 124 • S-280 64 GLIMÅKRA • Sweden
 Phone +46 44 449 00 • Fax +46 44 449 10
 e-mail: office@glimek.se • www.glimek.se



Belshaw Adamatic Bakery Group
 814 44th St NW
 Suite 103
 Auburn Washington 98001
 USA
 Phone: +1 732 544 8400
 Fax: +1 732 544 0735